

## Cooling & Heating Division



# FT MOD

**PROCESS CONDENSATE DRAIN SYSTEM**

**Improving your business  
is our business**

Thermax offers products, systems and solutions in energy and environment engineering to industrial and commercial establishments around the world. Its business expertise covers heating, cooling, waste heat recovery, captive power, water treatment & recycling, air pollution control & waste management and performance chemicals.

Thermax brings to customers extensive experience in industrial applications and expertise through technology partnerships and strategic alliances.

Operating from its Head Quarters in Pune (Western India), Thermax has built an international sales & service network spread over South East Asia, Middle East Africa, Russia, UK and the US. It has a full-fledged ISO 9001, 2000 and ISO 14000 accredited manufacturing setup.

### Cooling & Heating Division

Offers a wide range of steam boilers, thermal oil heaters and hot water generators. It has expertise in a wide range of fuels - oil, gas, solid and agro - waste/biomass fuels. Supporting a broad array of industries to generate, transfer and conserve heat for a host of applications, the division's products are exported to South East Asia, Middle East, Africa, Europe, CIS and SAARC.

## GENERAL

The main function of steam trap is to permit steam condensate to flow out while retaining steam within the system.

Steam trap is usually provided with inlet, outlet and bypass valves. Strainer and Non-return valve (Disc Check Valve, DCV) is also included. Installation of all these components in a well-designed sequence is time consuming and difficult, when done at site.

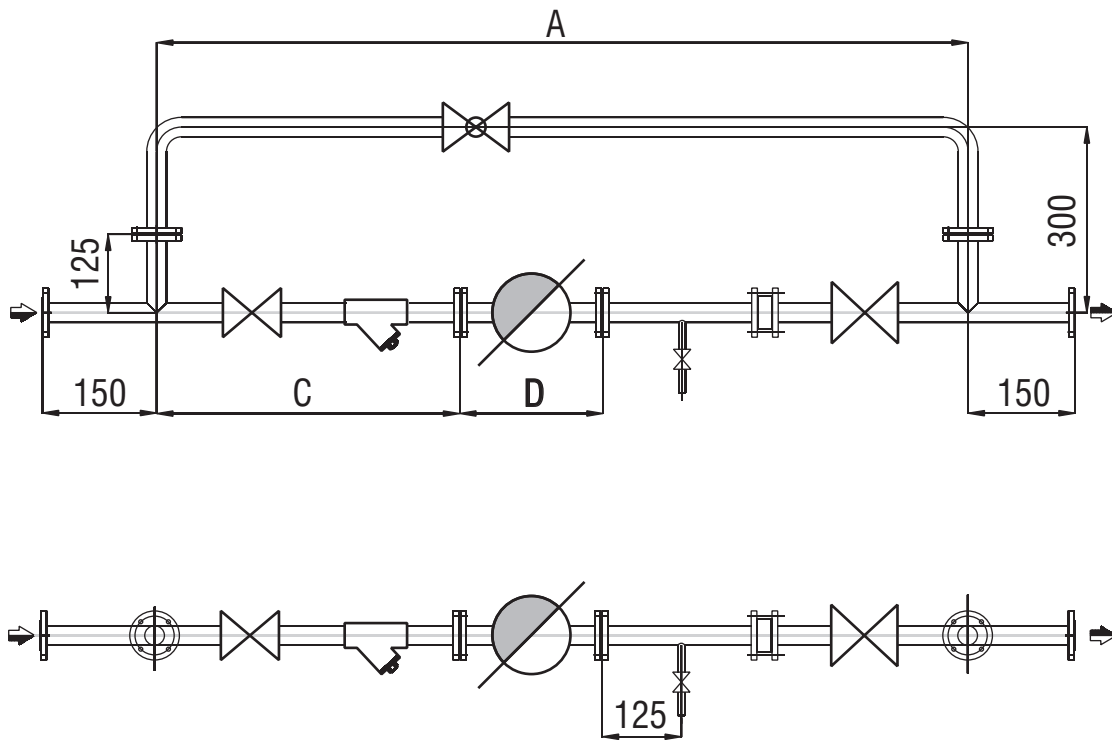
Thermax offers ready to install Float Trap modules, designed by incorporating all the above components in a proven sequence

## TECHNICAL SPECIFICATIONS

S.No	Description	MOC
1	Inlet Gate Valve	ASTM A 105 Gr.B
2	Y-Strainer	SS Body with SS internals
3	Float Trap with Thermostatic Air Vent	GGG 10.3 with SS internals
4	Test Valve	ASTM A 105 Gr.B
5	Disc Check Valve	SS Body with SS Internals
6	Outlet Gate Valve	ASTM A 105 Gr.B
7	Bypass Globe Valve	ASTM A 105 Gr.B
8	Inter Connecting Piping	ASTM A 106 Gr.B
9	End Connections - Flanged	ASA #150/300 ANSI 16.5

## MODELS & TRAP SIZES

	FTMOD 15NB	FTMOD 20NB	FTMOD 25NB	FTMOD 40NB	FTMOD 50NB
A	1450	1450	1495	1680	1680
B	1750	1750	1795	1980	1980
C	550	550	550	600	600
D	325	325	345	470	470
E	575	575	600	610	610



## INSTALLATION GUIDELINES

- Entire FT module should be properly supported.
- By pass valve preferably should be in vertical plane
- Test Valve provided after the Float trap, should preferably drain downwards.
- The entire FT module should be given a slight downward gradient so that condensate drains out by gravity at shut down conditions.
- Ensure free movement of condensate from equipment to trap module preferably by gravity.
- Ensure trap module is located close to the equipment.

## PRE COMMISSIONING, COMMISSIONING AND OPERATION

### PRE COMMISSIONING CHECKS

- FT trap module commissioning is to be done in combination with steam consuming equipment.
- Close inlet, outlet and test valve of FT trap module.
- Open the by pass valve and flush the system.
- Remove the strainer cover and strainer screen.
- Clean the strainer screen under jet of water / compressed air. Refit the strainer cover in position.

### COMMISSIONING

- Close bypass valve, test valve of FT module.
- Slowly open the steam supply to equipment and start using the equipment for normal production activity
- Ensure proper functioning of steam trap by opening the test valve. Only condensate with haze of flash steam is observed when float trap is functioning properly. If no condensate but only jet of steam is observed coming out of test valve indicates that steam trap is passing steam.
- If neither steam, nor condensate is not coming out of test valve when main supply is on then trap is water logged. Also check that trap is warm.

### MAINTENANCE

- Test Valve to be used to check the performance of trap. Frequency of testing recommended is once in a week or whenever the trap module is restarted.
- Periodic cleaning of strainer screen once in a week.

## HOW TO ORDER?

Please provide the following details

Steam Consuming Equipment	:
Process temperature required °C	:
Average Condensate Load (kg/hr)	:
Steam Inlet Pressure (kg/cm <sup>2</sup> )	:
Back Pressure (kg/cm <sup>2</sup> )	:

**Special inspection and certification available on request**

In view of our constant endeavor to improve the quality of our products, we reserve the right to alter or change specifications without prior notice.



**THERMAX**

Sustainable Solutions in  
Energy & Environment

### COOLING & HEATING DIVISION

#### Services SBU - FEMS

D - 13, MIDC Industrial Area, R. D. Aga Road,  
Chinchwad, Pune 411 019. INDIA  
Tel.: +91-20-2747 5941  
Fax: +91-20-2747 7080  
E-mail: info.c&hservices@thermaxindia.com

#### AHMEDABAD 380 006

Tel.: (079) 2657 5408 / 5341 / 7073  
Fax: (079) 2657 7270  
E-mail: mambiar@thermaxindia.com

#### BANGALORE 560 020

Tel.: (080) 2346 7761 - 64  
Fax: (080) 2346 7760  
E-mail: adminblr@thermaxindia.com

#### CHENNAI 600 018

Tel.: (044) 2435 3831 - 34  
Fax: (044) 2435 3841  
E-mail: chennaidivsupp@thermaxindia.com

#### HYDERABAD 500 482

Tel.: (040) 2339 6820, 2331 0254  
Fax: (040) 2331 2335  
E-mail: hyd\_sec@thermaxindia.com

#### MUMBAI 400 016

Tel.: (022) 2204 5391, 2204 5324  
Fax: (022) 2204 0859  
E-mail: psecretar@thermaxindia.com

#### NEW DELHI 110 057

Tel.: (011) 2614 5319, 2614 5701  
Fax: (011) 2614 5311, 2614 8679  
E-mail: psupport@thermaxindia.com

#### KOLKATA 700 016

Tel.: (033) 2282 6711 - 13  
Fax: (033) 2282 6769  
E-mail: mbiswas@thermaxindia.com

#### VADODRA 390 005

Tel.: (0265) 231 4802, 234 5442  
Fax: (0265) 231 0051  
E-mail: pbaroda@thermaxindia.com

[www.thermaxindia.com](http://www.thermaxindia.com)

International offices at  
Indonesia, Russia, Kazakstan, Saudi Arabia,  
Malaysia, Bangladesh, Sri Lanka, Hong Kong, China  
Thailand, UAE, Kenya, Nigeria, Brazil, UK, USA

### Thermax Business Portfolio

**Boilers & Heaters**

**Absorption Cooling**

**Air Pollution Control**

**Captive Power**

**Chemicals**

**Water & Waste Solutions**